

Adult Abnormal Liver Function Tests Primary Care Clinical Pathway

For any queries regarding the content of this document e-mail: nclpcb.pathways@nhs.net

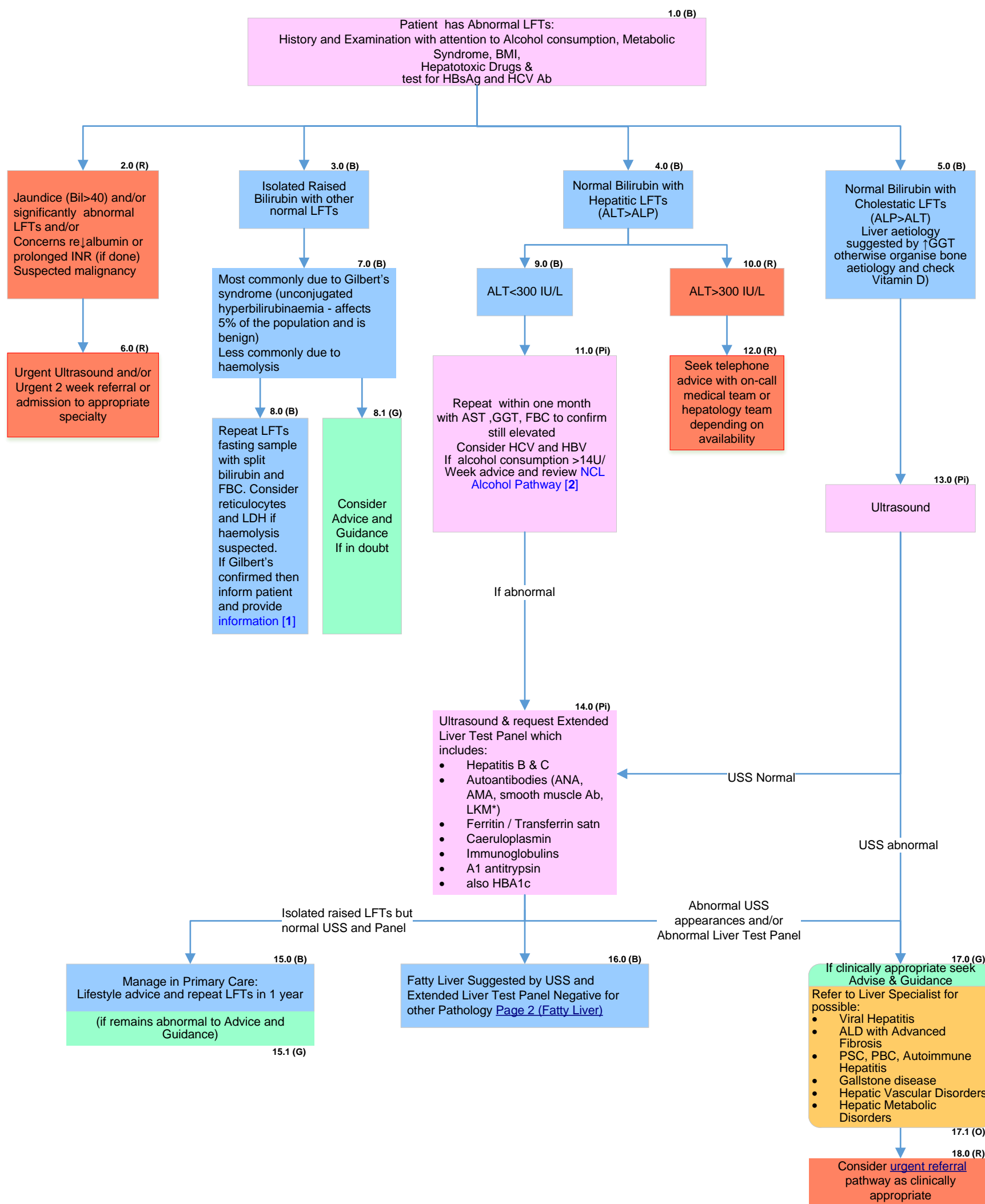
Latest Version	Final version February 2023
Previous Versions	December 2013, February 2016, February 2019
Review Date	February 2026
Approving Body	NCL ICB CAG
NCL-Wide / Borough(s)	NCL-Wide
Author(s)	Dr Nick Dattani, Louis China, Douglas Macdonald

- Pi "Must do" actions for GP's / (Triaged by RSS)
- B Recommendations for Primary Care
- R Red flag / urgent referral
- O Routine referral
- P Public health intervention
- G Audio-visual aids for patients and GP
- Click icon for clinical evidence

Right-click to use hyperlink

Note: Alpha-numeric step references are to aid printing in black & white and colour blindness

Investigations must be within 6 months of date of referral



- Consider doing LFTS
- if sx of liver/bile system disease e.g. abdo pain/nausea/vomiting/jaundice/fatigue/anorexia
 - pt drinks excessively
 - pt taking medication that affects the liver
 - pt has diabetes or other metabolic disorder
 - obesity
 - GGT – useful in cholestasis or monitoring
 - changes in alcohol consumption

Please note - LFTS are normal in up to 25% patients with cirrhosis. If there are risk factors for liver disease (e.g. harmful alcohol, viral hepatitis) please test according to the relevant pathway.

[1] Gilbert's Syndrome
<http://www.nhs.uk/conditions/gilbertssyndrome/Pages/Introduction.aspx>

[2] NCL Alcohol Pathway
[EDITING NOTE: To add in URL for NCL alcohol pathway once uploaded onto GP website]

*LKM=liver & kidney microsomal Ab
AMA = mitochondrial antibody
ANA = anti nuclear Ab